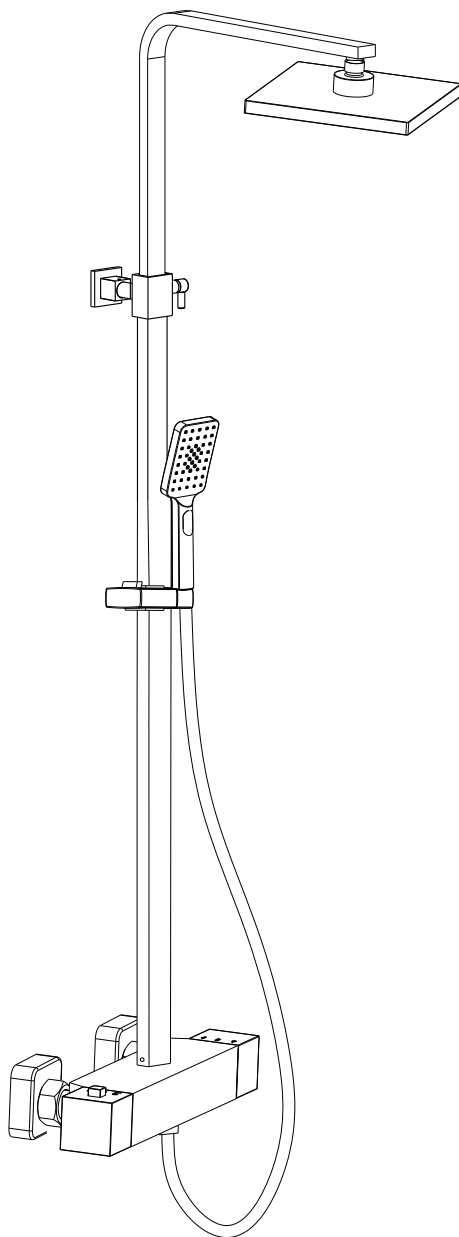


# Shower Thermostatic Mixer Fitting Instructions



Thank you for selecting this product.

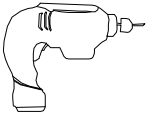
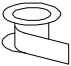
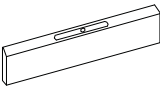

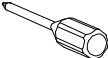
We have taken great care to ensure that this product reaches you in perfect condition. However should any parts be damaged or missing, please contact the retailer from where the product was purchased referencing the product description. This does not affect your statutory rights. In addition if you require replacement parts your point of purchase will be happy to assist.

<b>Contents</b>	<b>Page</b>
<b>Installation Notices</b>	<b>3</b>
<b>Component Listing</b>	<b>4</b>
<b>Technical Drawings</b>	<b>5</b>
<b>Installation Process</b>	<b>6-7</b>
<b>Product Operation and Maintenance</b>	<b>8</b>

## Installation Notices

**Safety Notice:** Prior to drilling into walls, check there are no hidden electrical wires, cables or water supply pipes. Always wear protective equipment such as safety glasses and hearing protection whilst using power tools.

### Tools for installation (not supplied)

		
Electric drill	PTFE Tape	Spirit Level
		
Wrench	Screw driver	

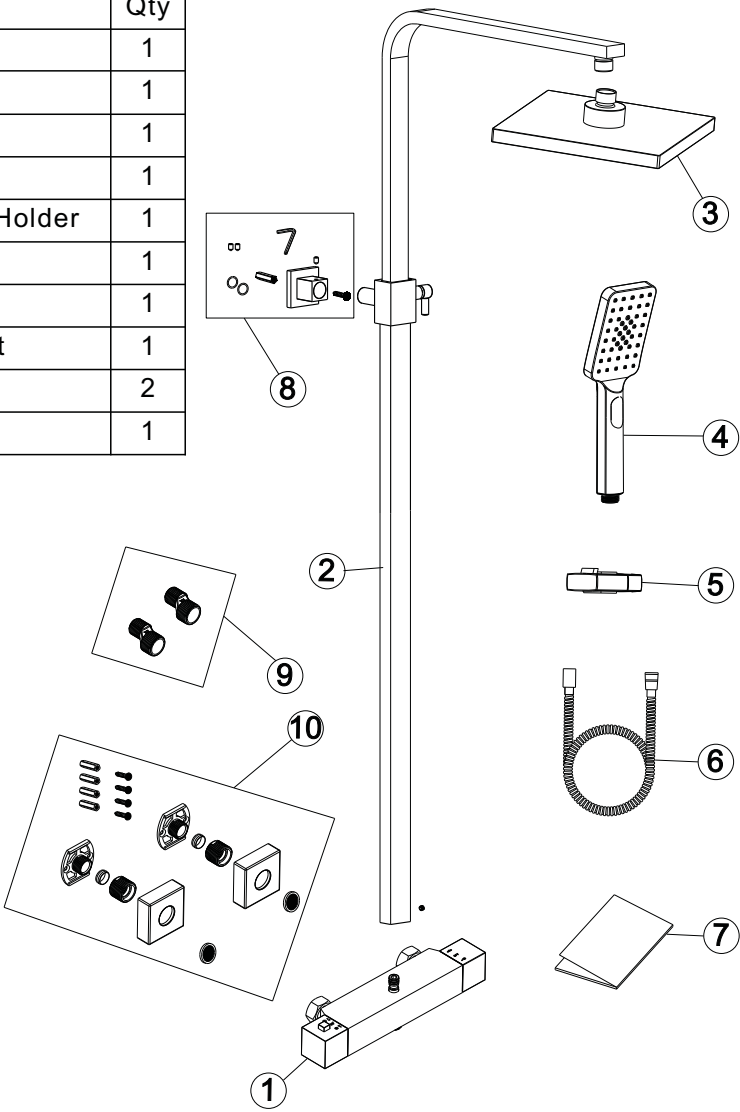
## Guarantee

**All product are manufactured to the highest standards and are covered by a 5 year manufacture's guarantee.\***

\* This does not affect your statutory rights

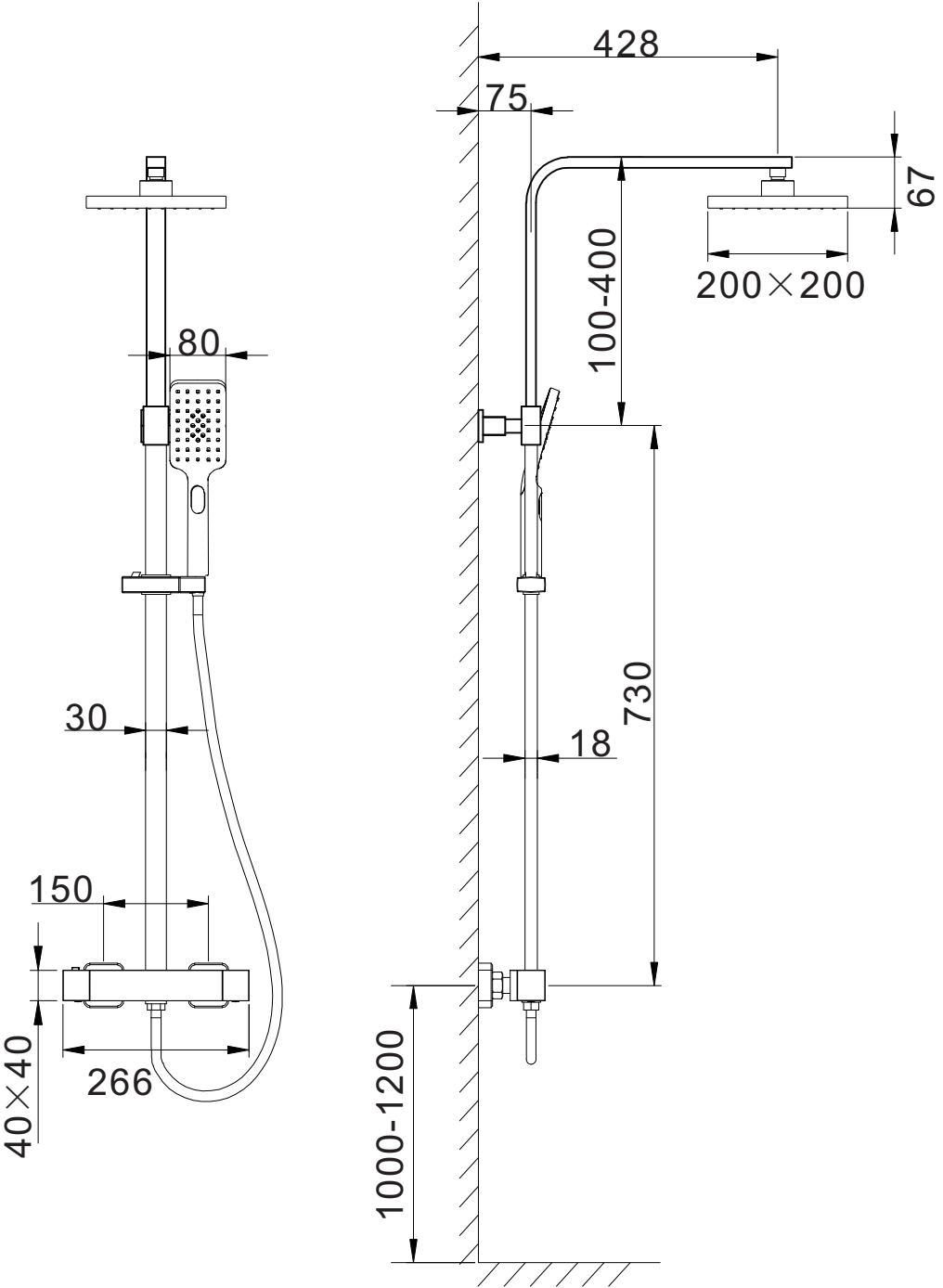
Component Listing

No.	Name	Qty
1	Shower Body	1
2	Riser Rail	1
3	Shower Head	1
4	Shower Handset	1
5	Shower Handset Holder	1
6	Shower Hose	1
7	Instructions	1
8	Riser Rail Bracket	1
9	Pipe Couplers	2
10	Easy Fix Kit	1

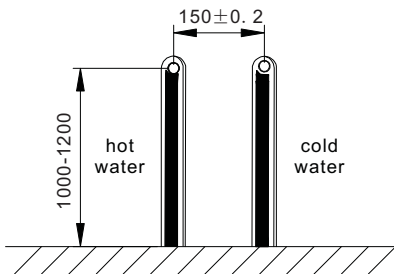


	Wall Plate
	Olive
	Union
	Cover Plate
	Filler

\*Important note: - Screws and wall plugs provided are for solid wall types only.

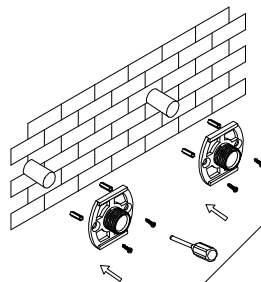


## Installation Procedure

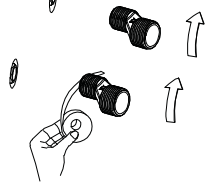


1. Pipe work centers should measure 150mm in distance and  $\geq 25$ mm of protrusion from the wall to aid fitment.

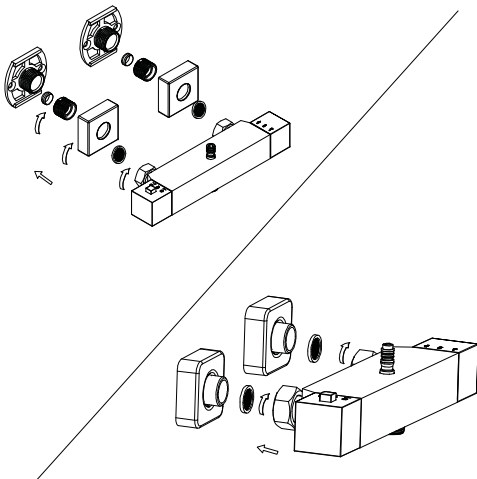
Easy Fix Kit (10)



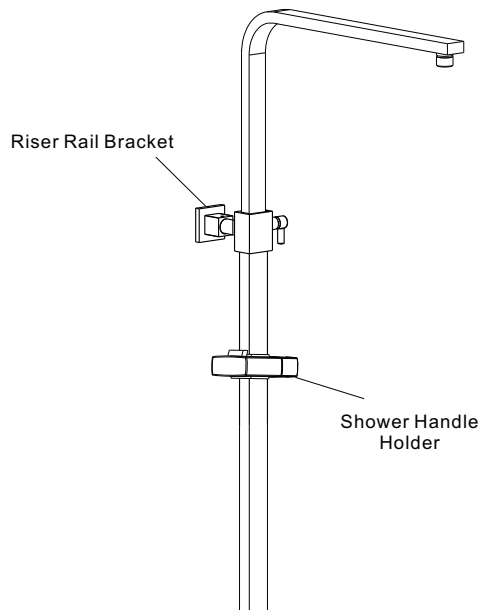
Pipe Couple's (9)



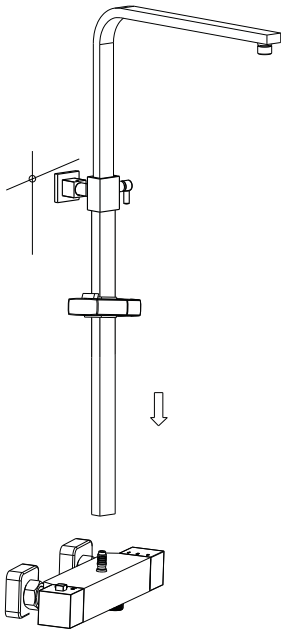
2. For your benefit we have included two types of fittings with this shower- you only need to choose the one that best fits your particular installation.



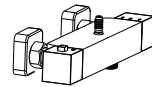
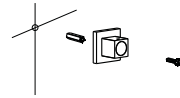
3. When attaching the shower body (1) to the shower fixing kits, ensure the 15mm olive, pipe coupler, cover plate and filter are all inserted first before securing the shower body in place.



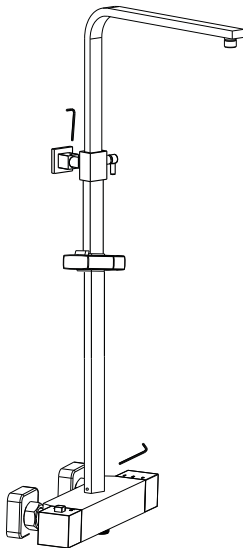
4. Once the shower body has been installed, the riser rail should then be fitted into place, using riser rail bracket (8). To help with positioning, attach the riser rail bracket on to the riser rail.



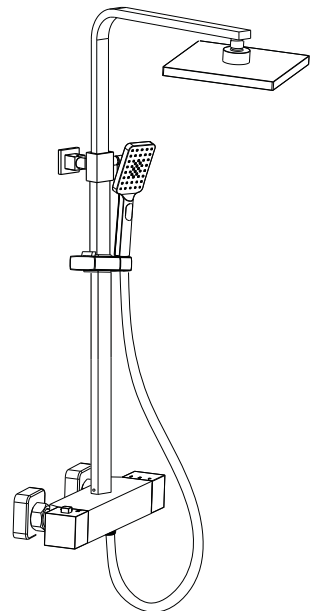
5. Attach the riser rail and mark the desired location for the riser rail bracket (8)



6. Remove the riser rail and riser rail bracket (8) and secure this into the position previous marked using the screws provided



7. Attach the riser rail on to the shower body and secure the grub screw in the riser rail bracket (using Allen key provided)



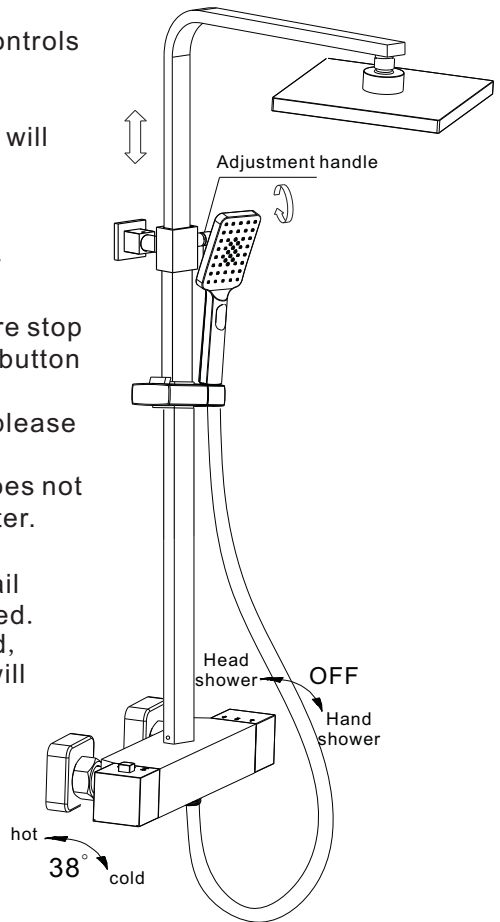
8. Attach the shower head (3), to the riser rail (ensuring the included washer is used to prevent leakage) and attach the shower hose (6) to the shower body and shower handset (4)

## Product Operation and Maintenance

1. Turning the right handle of the shower, controls the flow rate and turning the handle anti-clockwise will increase the flow to the main shower head. Turning the handle clockwise will increase the water flow rate to the shower handset.

2. Turning the left handle controls the water temperature. To prevent scalding, a safety feature of the shower includes a temperature stop at 38 degrees. To override this function the button on the handle will need to be pressed. If overriding the temperature when finished, please return the handle to below 38 degrees as to ensure the next person using the shower does not risk being exposed to high-temperature water.

3. The Adjustable handle on the Riser Rail allows The height of the rail to be adjusted. Once the desired height as been selected, turning the adjustable handle clockwise will secure the rail in position.



## Products Maintenance

- Whilst modern plating techniques are used during the manufacturing of this product, if not correctly cleaned and cared for -the life of the product will be reduced.
- It is recommended that your product be cleaned with a soft damp cloth only, harsh stains should be removed using washing up liquid.
- Use of chemicals/scourers will damage the plated surface.