



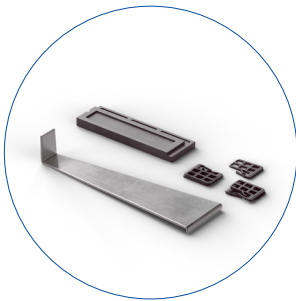
INSTALLATION SET

Technical data sheet
English


QUICK-STEP
FLOOR DESIGNERS

General information

This installation set provides you with three essentials to swiftly install your floor. Firstly, it contains a tapping block to easily click planks together without damaging the click joint. Secondly, it comes with a metal pull bar to wiggle in those hard-to-reach places. And thirdly, you get adjustable spacers to provide perfect expansion gaps between walls and the floor.



Contents

Composition

Colour

Tapping block

Polypropylene

Black

Pull bar

Galvanized metal

Silver

20 spacers

Polypropylene

Black

Order code

Dimensions

QSTOOLA

395 x 100 x 47 mm

Applicable for:

Quick-Step Laminate, Alpha Vinyl and Parquet floors.

Features

Quick-Step accessories are specifically developed for Quick-Step floors.

✓ **Protection of the clickjoints**

This set comes with a tapping block which is designed to protect the Quick-Step Uniclic clickjoint. Tap the planks gradually into position with a hammer, without damaging the tongue or groove.

✓ **Perfect expansion gaps**

The adjustable spacers provide perfect expansion gaps between walls and the floor.

✓ **Easy installation**

This installation set provides you with some essentials to swiftly install your floor. The Quick-Step pull bar facilitates the installation of your floor in places which are difficult to reach.

Installation

1. The high-quality Quick-Step **spacers** must be put between the planks and the wall. They provide a uniform and sufficient expansion gap. Place the spacers about every 30 cm/1 ft. When installing Laminate or Parquet flooring use 2 spacers horizontally and place them parallel to your floor. When installing Alpha Vinyl use 1 spacer vertically and clip it on the floor using the lip.
2. Place the Uniclic **tapping block** with the groove on top of the tongue of the plank and tap your planks into the correct position with a hammer. The Quick-Step tapping block is specially designed for installing a Uniclic floor and protects its tongue or groove.
3. Sometimes the tapping block cannot be used if there is not enough space (e.g. against the wall or under a radiator). The Quick Step **pull bar** is ideal for these situations. To place the plank correctly, put the Quick-Step pull bar over the edge of the plank and tap the plank into the correct position with a hammer.