

PERGO®

ACCESSORIES
Incizo Profile
English



Incizo Profile

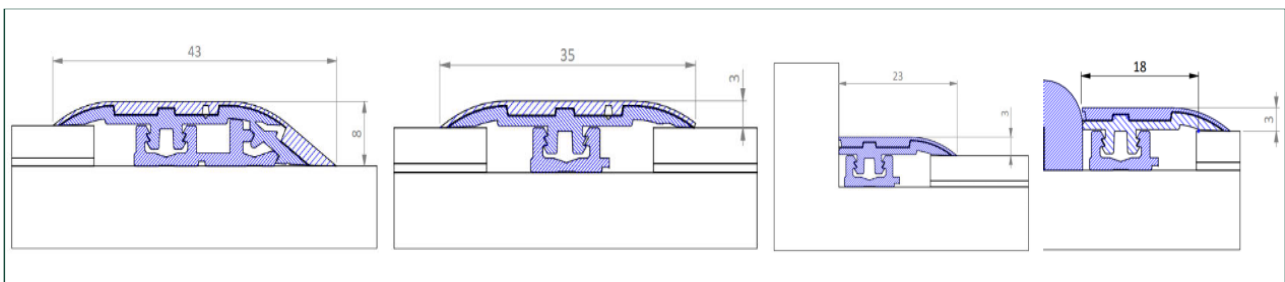
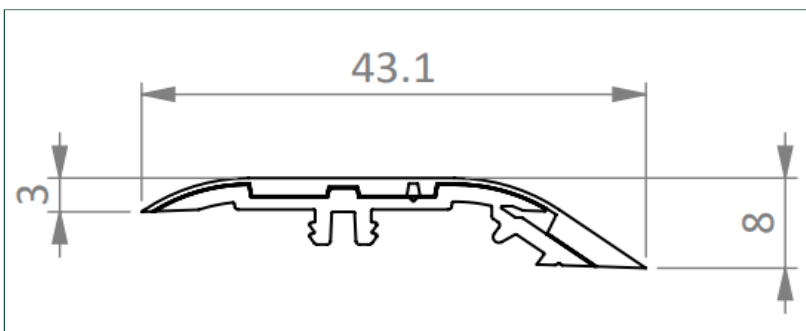


General information

From floor to finish!

Floor-made multifunctional profile to finish your floor and stairs in matching colours.

Simply cut the Incizo base profile to the desired shape with the supplied Incizo knife.



CONTENTS

COMPOSITION

COLOUR

Incizo profile

Pergo floorplanks & tiles

Colour matched

Multifunctional rail

PVC

Black

Incizo knife

Plastic holder with
metal knife inside holder

Incizo Profile

ORDER CODE**DIMENSIONS**

PGVFCINCP(-)

floorlength x 43 x 8 mm

Applicable for:

All Pergo Vinyl floors.

The floor must be able to expand and contract on all sides. This is why an expansion gap must be provided on all sides of the floor, around pipes, thresholds and under door frames. The exact expansion gap size depends on the floor type. Consult the installation instructions of your Pergo floor to know the required size of the expansion gap. To finish of this gap, we offer a wide range of skirting and profiles.

Incizo Profile

Applications

With the Incizo 4 in 1 profile, you can finish your floor in every situation.

1. **Expansion profile**

Connect two floors of the same height: in doorways, L-shaped rooms, or rooms where the floor length or width is bigger than the allowed dimensions of the floor. (Please consult the installation instructions of your floor)



2. **Adapter profile**

Connect two floors of different heights. Make the transition from your vinyl floor to a floor covering at lower height, like tiles.



3. **End profile**

Finish your floor along walls, windows, sliding doors, a slightly higher doorstep or tile floor.



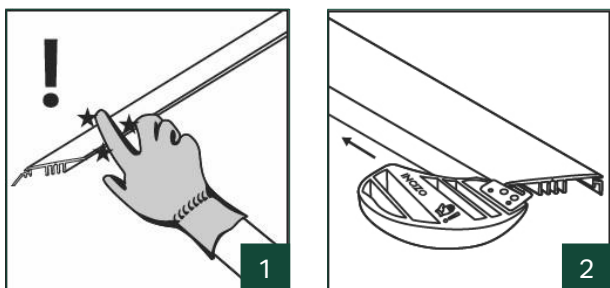
4. **Transition profile**

Create a nice transition between your vinyl floor and other flooring types, like a fixed carpet.



Incizo Profile

Preparation



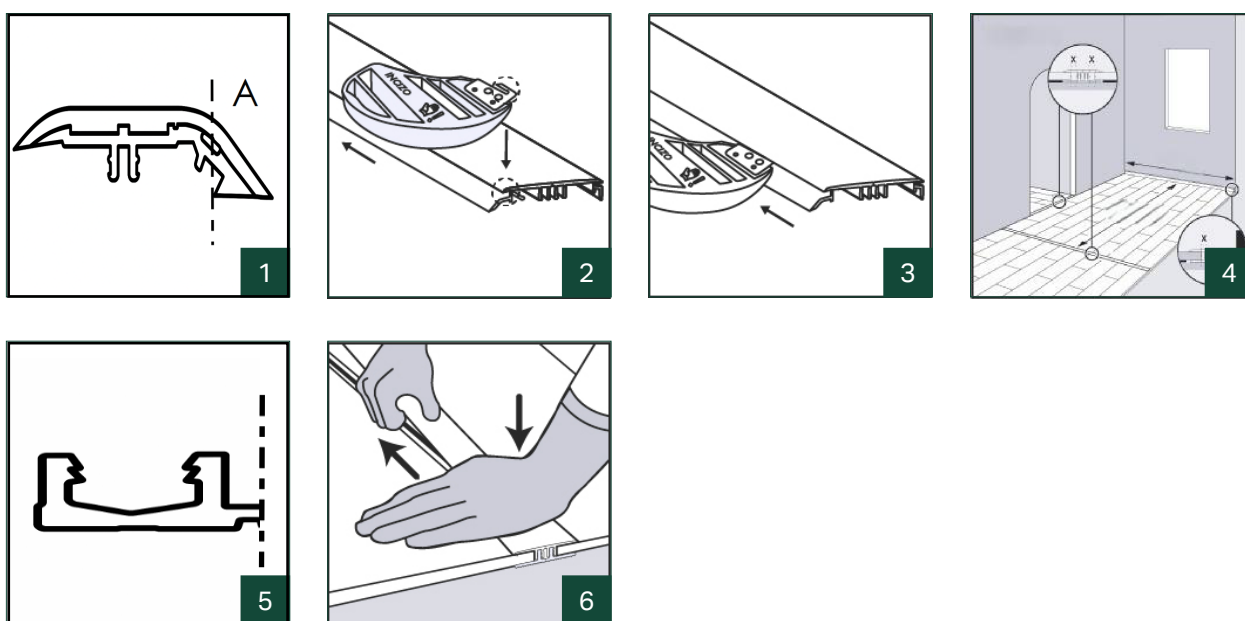
1. **Always wear gloves - the edge of the profile and the blade are sharp. Read the instructions carefully before use.**
2. The Incizo splitter can be used very simply to cut the profile to the desired profile shape. When cutting the profile, always lay it horizontally on a stable surface.

Incizo Profile

Installation

Expansion profile

An expansion profile connects two floors of the same height.



1. First saw the Incizo profile to the correct length. Then use the supplied Incizo knife to cut away piece A to obtain an expansion profile.
Tip: for easy cutting, cut both lengths first before removing the piece.
2. Place the slitter so that the blade fits into the narrow slit in the profile.
3. Gently pull the slitter backwards, so you cut the profile. Avoid sliding in the top part. After cutting, remove the cut-offs.
4. While installing the floor, be sure to allow sufficient space between the two surfaces that will be joined with the profile. Mark the ground to indicate how far the edge of the floor will extend.
Cut the plastic rail to the correct length and place it in the middle of the open space between the two floor surfaces. Ensure that there is a sufficient expansion gap between the floor and the raised legs of the rail, in which the profile will be clamped.

TECHNICAL DATA SHEET - EDITION 01.2026

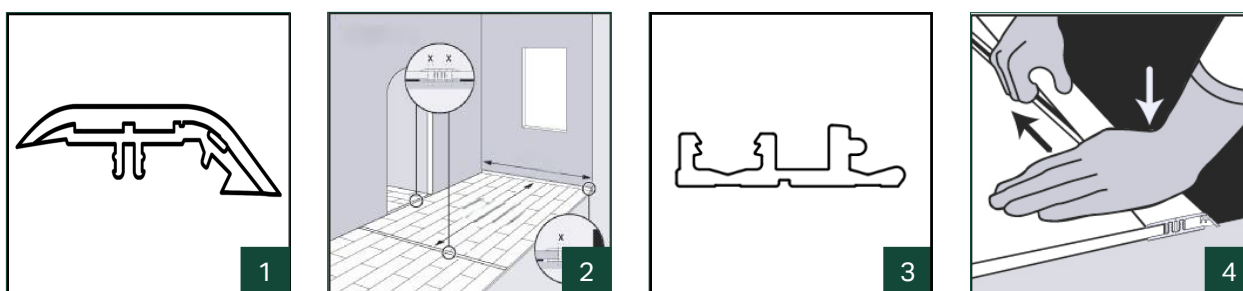
Incizo Profile

5. Cut the sub profile.
The rail can be installed with the Pergo Multiglue (PGGLUE290) to any type of surface.
6. Gently press the profile from one side of the rail to the other. Press against the floor.

Incizo Profile

Adapter profile

An adapter profile connects two floors of different heights.

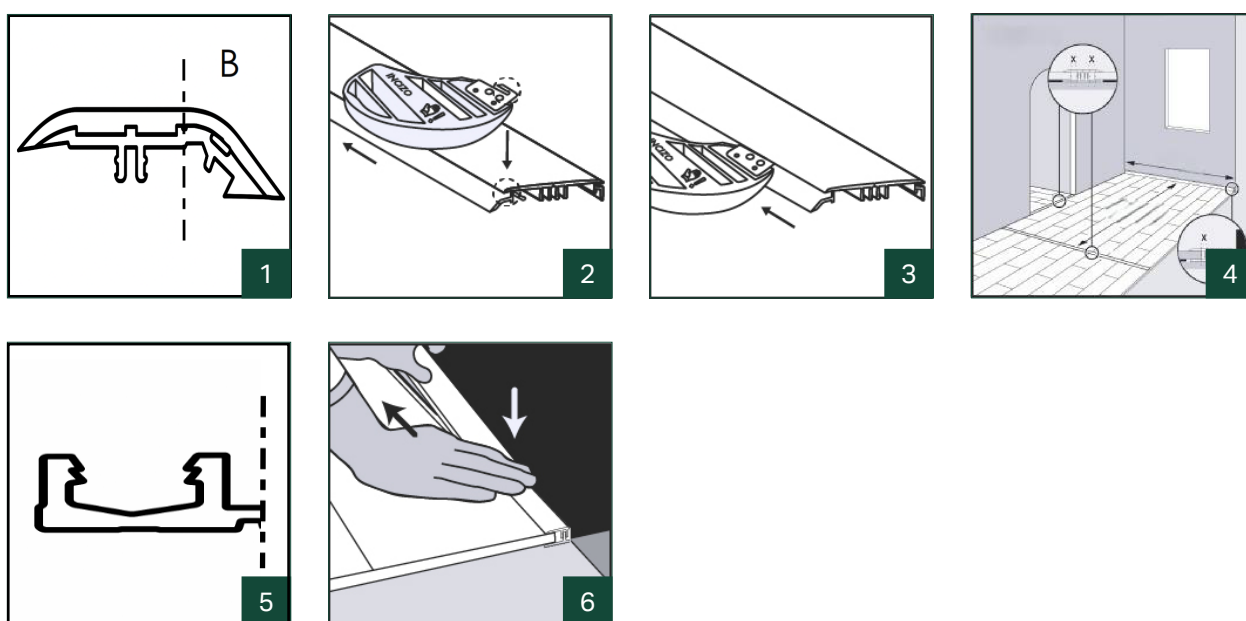


1. First saw the Incizo profile to the correct length.
2. While installing the floor, be sure to allow sufficient space between the two surfaces that will be joined with the profile. Mark the ground to indicate how far the edge of the floor will extend.
Cut the plastic rail to the correct length and place it in the middle of the open space between the two floor surfaces. Ensure that there is a sufficient expansion gap between the floor and the raised legs of the rail, in which the profile will be clamped.
3. The rail can be installed with the Pergo Multiglue (PGGLUE290) to any type of surface.
4. Gently press the profile from one side of the rail to the other. Press against the floor.

Incizo Profile

End profile

An end profile is used to finish your floor along walls or windows.



1. First saw the Incizo profile to the correct length. Then use the supplied Incizo knife to cut away piece B to obtain an end profile.
2. Place the slitter so that the blade fits into the narrow slit in the profile.
3. Gently pull the slitter backwards, so you cut the profile. Avoid sliding in the top part. After cutting, remove the cut-offs.
4. While installing the floor, be sure to allow sufficient space between the two surfaces that will be joined with the profile. Mark the ground to indicate how far the edge of the floor will extend.
Cut the plastic rail to the correct length and place it in the middle of the open space between the two floor surfaces. Ensure that there is a sufficient expansion gap between the floor and the raised legs of the rail, in which the profile will be clamped.

TECHNICAL DATA SHEET - EDITION 01.2026

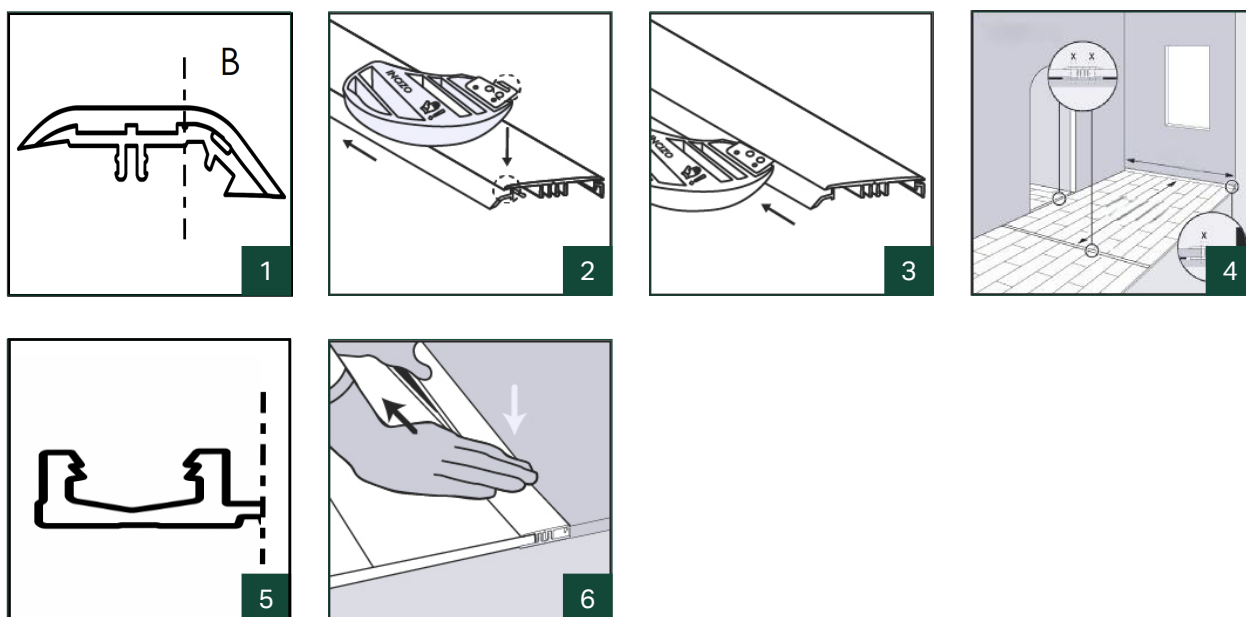
Incizo Profile

5. Cut the sub profile.
The rail can be installed with the Pergo Multiglue (PGGLUE290) to any type of surface.
6. Gently press the profile from one side of the rail to the other. Press against the floor.

Incizo Profile

Transition profile

A transition profile is used to create a nice transition between your vinyl floor and other flooring types like a fixed carpet.



1. First saw the Incizo profile to the correct length. Then use the supplied Incizo knife to cut away piece B to obtain a transition profile.
2. Place the slit so that the blade fits into the narrow slit in the profile.
3. Gently pull the slit backwards, so you cut the profile. Avoid sliding in the top part. After cutting, remove the cut-offs.
4. While installing the floor, be sure to allow sufficient space between the two surfaces that will be joined with the profile. Mark the ground to indicate how far the edge of the floor will extend.
Cut the plastic rail to the correct length and place it in the middle of the open space between the two floor surfaces. Ensure that there is a sufficient expansion gap between the floor and the raised legs of the rail, in which the profile will be clamped.

TECHNICAL DATA SHEET - EDITION 01.2026

Incizo Profile

5. Cut the sub profile.
The rail can be installed with the Pergo Multiglue (PGGLUE290) to any type of surface.
6. Gently press the profile from one side of the rail to the other. Press against the floor.

Unilin bv division flooring
Ooigemstraat 3, B-8710 Wielsbeke
T: +32 56 67 52 11
unilin.com
pergo.com

 **UNILIN**

PERGO®