

# TRISEP DS Food & Dairy UP005 Series

TRISEP sanitary membrane elements for food & dairy applications have a long history of outstanding, stable field performance. NADIR UP005 polyethersulfone (PES) membrane with a nominal 5,000 Da molecular weight cut-off offers the highest protein rejection in the industry for membranes with this cut-off. In field studies UP005 membrane had as much as 75% less protein passage than competitive membranes. TRISEP elements are available with a number of different feed spacers and in all sizes common in the industry. TRISEP DS elements are built with FDA compliant materials, are compliant with European food regulations (EU 10/2011 and EC 1935/2004) and comply with USDA standards.

## MEMBRANE CHARACTERISTICS

<b>Membrane</b>	NADIR UP005
<b>Membrane Type</b>	Polyethersulfone (PES)
<b>Nominal M.W.C.O. (Da)</b>	5,000

## DESIGN INFORMATION

Model	Membrane Area m <sup>2</sup> (ft <sup>2</sup> )	Feed Spacer Thickness (mil) <sup>a</sup>
TRISEP DS UP005 3838-31	7.0 (75)	31
TRISEP DS UP005 3838-46	5.7 (61)	46
TRISEP DS UP005 3838-65	4.5 (48)	65
TRISEP DS UP005 3838-80	4.0 (43)	80
TRISEP DS UP005 6338-31	20.5 (221)	31
TRISEP DS UP005 6338-46	17.1 (184)	46
TRISEP DS UP005 6338-65	12.9 (139)	65
TRISEP DS UP005 6338-80	11.5 (124)	80
TRISEP DS UP005 8038-31	31.1 (335)	31
TRISEP DS UP005 8038-46	25.1 (270)	46
TRISEP DS UP005 8038-65	20.2 (217)	65
TRISEP DS UP005 8038-80	18.0 (194)	80
TRISEP DS UP005 8338-31	34.0 (366)	31
TRISEP DS UP005 8338-46	27.5 (296)	46
TRISEP DS UP005 8338-65	23.5 (253)	65
TRISEP DS UP005 8338-80	21.2 (228)	80

<sup>a</sup> All models on this sheet have a netting outer wrap and diamond shaped feed spacers.

## OPERATING PARAMETERS

<b>Maximum Operating Pressure</b>	10 bar (145 psi)
<b>Maximum Operating Temperature</b>	50°C (122°F)
<b>Cleaning pH/Temperature Range<sup>1</sup></b>	1.5 - 11.5 at 50°C (122°F)
<b>Cleaning Chlorine Tolerance</b>	200 ppm for sanitization at pH ≥ 10.5
<b>Maximum Pressure Drop</b>	1 bar (15 psi) per element; 4 bar (60 psi) per housing

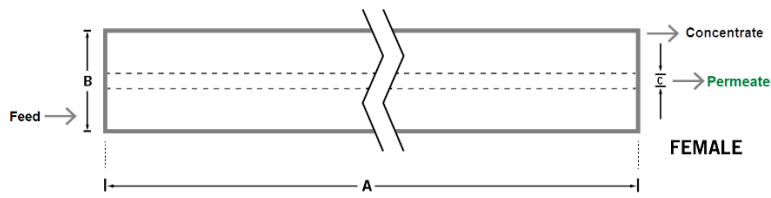
<sup>1</sup> Refer to temperature and pH limits in Membrane Cleaning Guide - Food & Dairy: UF & MF Elements (TSG-C-004).

PHYSICAL DIMENSIONS

Model	Element Weight kg (lb) <sup>b</sup>	Dim. A mm (inches)	Dim. B mm (inches)	Dim. C <sup>c</sup> mm (inches)	Permeate Tube
TRISEP DS UP005 3838-31	4 (9)	965 (38.0)	96 (3.8)	21.1 (0.83)	Female
TRISEP DS UP005 3838-46	4 (9)	965 (38.0)	96 (3.8)	21.1 (0.83)	Female
TRISEP DS UP005 3838-65	4 (9)	965 (38.0)	96 (3.8)	21.1 (0.83)	Female
TRISEP DS UP005 3838-80	4 (9)	965 (38.0)	96 (3.8)	21.1 (0.83)	Female
TRISEP DS UP005 6338-31	11 (24)	965 (38.0)	162 (6.3)	28.9 (1.138)	Female
TRISEP DS UP005 6338-46	11 (24)	965 (38.0)	162 (6.3)	28.9 (1.138)	Female
TRISEP DS UP005 6338-65	11 (24)	965 (38.0)	162 (6.3)	28.9 (1.138)	Female
TRISEP DS UP005 6338-80	11 (24)	965 (38.0)	162 (6.3)	28.9 (1.138)	Female
TRISEP DS UP005 8038-31	16 (36)	965 (38.0)	201 (7.9)	28.9 (1.138)	Female
TRISEP DS UP005 8038-46	16 (36)	965 (38.0)	201 (7.9)	28.9 (1.138)	Female
TRISEP DS UP005 8038-65	16 (36)	965 (38.0)	201 (7.9)	28.9 (1.138)	Female
TRISEP DS UP005 8038-80	16 (36)	965 (38.0)	201 (7.9)	28.9 (1.138)	Female
TRISEP DS UP005 8338-31	18 (40)	965 (38.0)	211 (8.3)	28.9 (1.138)	Female
TRISEP DS UP005 8338-46	18 (40)	965 (38.0)	211 (8.3)	28.9 (1.138)	Female
TRISEP DS UP005 8338-65	18 (40)	965 (38.0)	211 (8.3)	28.9 (1.138)	Female
TRISEP DS UP005 8338-80	18 (40)	965 (38.0)	211 (8.3)	28.9 (1.138)	Female

<sup>b</sup> Shipping weight is dependent on packaging material and quantity shipped.

<sup>c</sup> Dimension "C" is the Inner Diameter.



IMPORTANT INFORMATION

- Start-up:** MANN+HUMMEL Water & Fluid Solutions recommends flushing elements for 30 minutes at low pressure and discarding permeate during the flush prior to operation. For a more detailed start-up procedure, please see Element Start-Up Guide – System Start-Up (TSG-O-005).
- Cleaning:** TRISEP membrane elements must be cleaned periodically to ensure proper operation and to prevent membrane damage. Please see Membrane Cleaning Guide – Food & Dairy: UF & MF Elements (TSG-C-004).
- Storage:** TRISEP membrane elements must be stored appropriately to ensure proper operation and to prevent membrane damage. Please see Element Storage Guides (TSG-O-009 & TSG-O-010).
- Regulatory:** All models on this sheet conform to USDA 3A sanitary standard 45-03, use FDA (CFR Title 21) compliant materials, comply with EU regulation (EC) No. 1935/2004 and No. 10/2011, and have Halal and Kosher certifications.

CUSTOMIZABLE SPECIALTY ELEMENTS

MANN+HUMMEL Water & Fluid Solutions offers a full range of membranes and element designs for challenging water and process applications. Technologies include low-fouling RO, submerged UF, continuous high temperature, ultra-high pressure, unique sanitary designs and more. Contact us to customize a product that satisfies your specific requirements.

Contact

**Americas**  
 USA: +1 805 964 8003  
 sales.mnus@microdyn-nadir.com

**Asia**  
 China: +86 10 8413 9860  
 waterchina@mann-hummel.com  
 SEA: +65 6457 7533  
 Info.wfs@mann-hummel.com

**Europe**  
 Germany: +49 611 7118 7480  
 Italy: +39 0721 1796201  
 Info.wfs@mann-hummel.com

