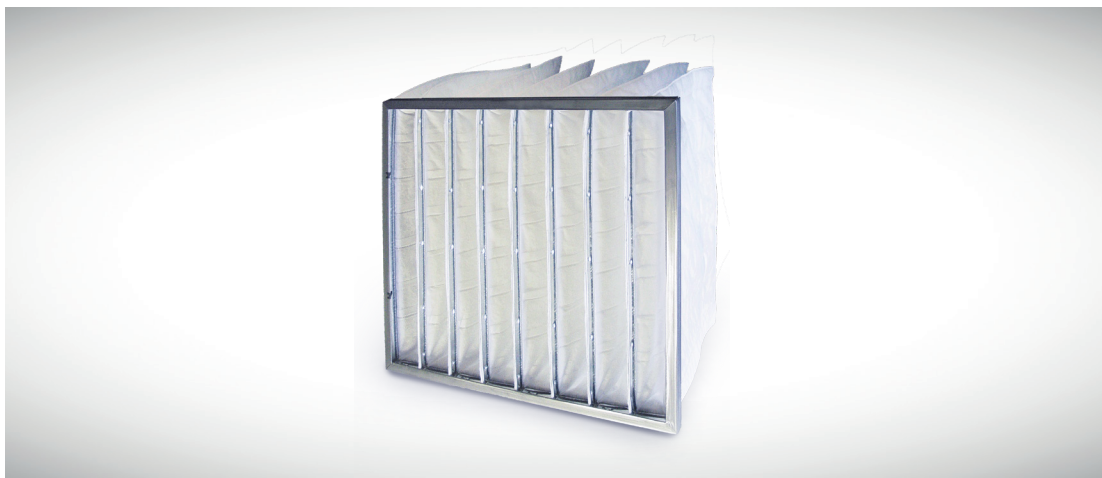


ProPocket Ultra HVAC Bag Filters

FEATURES

- *Sonic sealed pockets
- Extended surface synthetic media
- Constructed in a quality controlled environment
- Media backing provides durability for rigorous applications
- Available in MERV 10, 12, 14, 15, & 16 efficiencies



PROPOCKET ULTRA CONSTRUCTION & APPLICATIONS

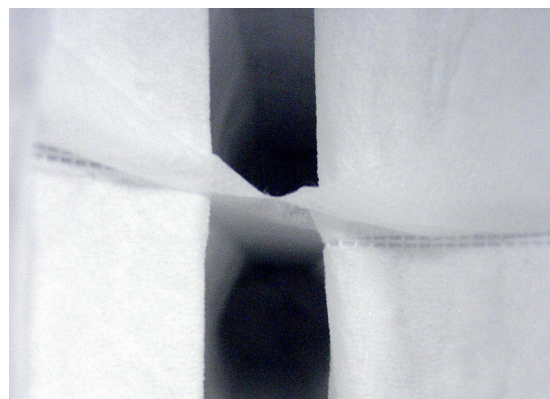


Ultra sonic pocket seal

The ProPocket Ultra HVAC bag filters are high efficiency, extended surface filters that feature progressive density synthetic media that offers high efficiency at a minimal resistance to air flow.

These filters utilize an advanced dual layer melt blown media. The medias dual layers allow for depth loading – which means they manage dirt and debris by capturing larger particles on the ‘prefilter’ layer and having the second layer focus on removing the smaller ‘target’ particles.

Depth loading results in much higher debris holding capacity – allowing for longer service life. The final layer of the ProPocket Ultra media is a spun bonded scrim backing that supports and protects the filter media. The combination of high removal efficiency and long service life makes the ProPocket Ultra a great value and an excellent choice for high humidity and moisture applications.



Aerodynamic channels inside pockets

PROPOCKET ULTRA
PERFORMANCE DATA

Media	Synthetic Media
Frame	13/16" Galvaneal Header (Optional: Extruded Aluminum)
Final Resistance	1.50 in. w.g. (373 PA)
Temperature Limit	150-175°F (65-80°C)
Meets Requirements	ANSI/UL 900

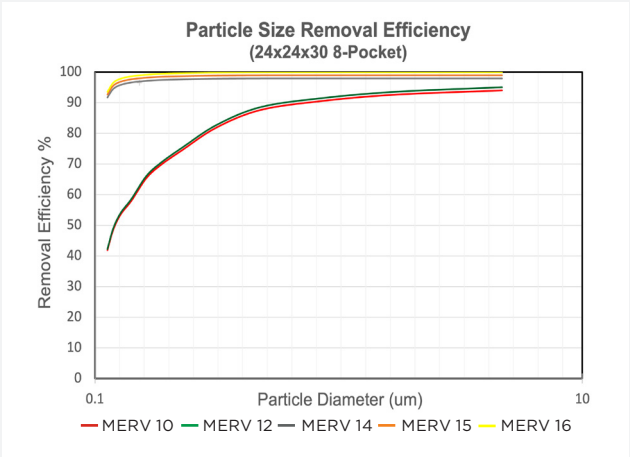
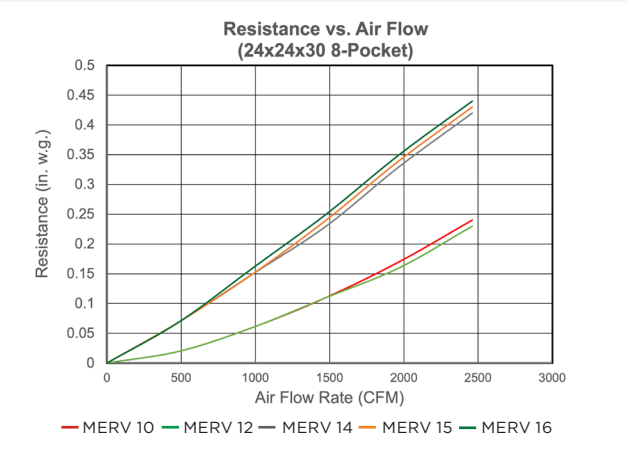
- Notes:
- Recommended final resistance = 1.50 in. w.g.
 - Max operating temperature: 175°F (79°C)
 - * Pockets may be sonic sealed or stitched, depending on manufacturing constraints.
 - Performance data is based on ASHRAE Test Standard 52.2 – Appendix J-2017.

Pocket size inches (mm)	Actual Size inches	# of Pockets	Media Area square feet (m²)
24x24x22 (610x610x559)	23.38x23.38x22	8	58 (5.4)
12x24x22 (305x610x559)	11.38x23.38x22	4	29 (2.7)
24x24x26 (610x610x660)	23.38x23.38x26	8	69 (6.4)
12x24x26 (305x610x660)	11.38x23.38x26	4	35 (3.3)
24x24x30 (610x610x762)	23.38x23.38x30	8	80 (7.4)
12x24x30 (305x610x762)	11.38x23.38x30	4	40 (3.7)
24x24x36 (610x610x914)	23.38x23.38x36	8	96 (8.9)
12x24x36 (305x610x914)	11.38x23.38x36	4	48 (4.5)

Please note that other sizes, depths and pocket combinations are available. Filter depth is measured from the front of the header to the end of the pocket, excluding hoops. Depth dimensions have a ± 1/2" tolerance.

TECHNICAL DATA

PROPOCKET ULTRA



MANN+HUMMEL is committed to continual product development – all descriptions, specifications and performance data are subject to change without notice. MANN+HUMMEL products are manufactured to exacting criteria – there can be a ±5% variance in filter performance.

LOCAL REPRESENTATIVE