



# KNAUF DIAMANT STEEL

Safe. Robust. Resilient.



# DELIVERS ON ITS PROMISE

Knauf Diamant became well established on the market as a robust, resilient board. A good basis also for the new Knauf Diamant Steel, which is now literally a surface traverse. Accordingly, high cantilever loads can be easily mastered. That's Knauf know-how in practice.

## Diamant Steel – The surface traverse

Cantilever loads up to 1.5 kN/m are possible for partitions and furring with a layer of Diamant Steel in combination with a covering layer of Diamant. Diamant Steel does not require traverses and delivers the maximum in flexibility in terms of fixing.



## › Fixing loads. For fixing of cantilever loads up to 1.5 kN/m

Dowel / screw	Maximum screw / dowel load capacity	
	1 x 12.5 + 0.4 mm Diamant Steel per cladding side in kg	2 x 12.5 + 0.4 mm Diamant Steel per cladding side in kg
Knauf Multi-Purpose Screw FN 4.3 x 65	30	60
Knauf Cavity dowel Hartmut	80	100



Measured with 300 mm eccentricity  
Specifications for ≥ CW75

# NEW BOARD, NEW SYSTEM, NEW OPPORTUNITIES

The new Knauf Diamant Steel delivers both the excellent properties of Knauf Diamant and metal lamination, and can be used both as a fire wall cladding and a surface traverse for high cantilever loads. All without any unnecessary expansion in width. The new

fire wall with Diamant Steel is the slimmest on the market. Its use as a surface traverse opens up new possibilities and complex construction solutions become a thing of the past. The new generation is called Knauf Diamant Steel.



## Deflection head with wall plug-in bracket



### Sliding wall bracket

- › For fastening CW profiles
- › Max. deflection of ceiling 40 mm
- › System tested fire protection

### UW runner

- › Perimeter runner for deflection heads
- › Arm length: 70 mm
- › Metal gauge: 0.7 mm

## Simply cost-effective

Knauf Diamant Steel incorporates sheet-metal lamination. The metal sheet must not be ordered separately and thus one work step per wall side can be omitted facilitating faster installation. Fluctuating steel prices are no longer an issue for you – you can be sure of your cost estimates with Knauf Diamant Steel.

### Knauf Diamant Steel

Knauf Diamant 12.5 mm plus 0.4 mm sheet steel lamination

- › Dimensions: 1250 x 2500 mm
- › Board thickness: 12.9 mm
- › Long edge: Half-rounded tapered edge
- › Raw board: GKFI acc. to DIN 18180
- › Screw fastening: Diamant Screw XTB
- › Jointing: Uniflott

### Fields of application:

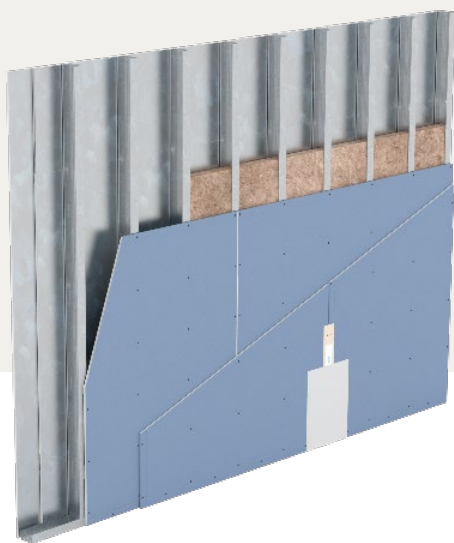
- › High fixed loads
- › Fire walls

# FIRE WALL ON A HIGH LEVEL

## Benefits of a system

There is frequently a demand for a deflection head. And it is mandatory if the deflection of the ceiling exceeds 10 mm. Our new system is tested up to 40 mm and can also forego the side bracket. Not only do we offer a visually appealing solution, but also simple installation without gypsum blocks and heavy-duty dowels.

The sliding wall plug-in bracket is only intended for every 2nd profile and the necessary accessories such as ceiling steel dowels, screws and nuts are supplied in the system.



### System design

- › Metal grid: CW50, CW75 or CW100
- › Stud spacing 312.5 mm
- › Glass wool
- › Cladding with 2 x 12.5 + 0.4 mm Diamant Steel per side
- › Installation of first layer horizontal, second layer vertical
- › Screw fastening using Diamant Screw XTB with cutting point

## The slimmest fire walls

Knauf Fire Walls are non-load bearing fire-resistant walls that retain their structural stability when exposed to a fire and remain effective as a room enclosure, offering a high resistance to falling components.

The new Knauf Diamant Steel delivers all this even up to wall heights of 9 metres and is the slimmest fire wall available on the market. It is truly unique!



**The slimmest fire wall**  
providing more floor space



**Double-layer cladding** with 12.5 mm board + 0.4 mm metal lamination



**Tested deflection head**  
up to 40 mm



**Simple and cost-effective**  
installation



**Tested wall height: 9 m**

Tested wall height of 9 meters

Still standing  
after 90 minutes  
exposure  
to fire – **test  
passed!**

**TESTED**





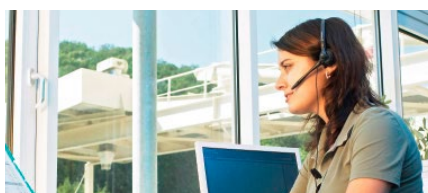
# BENEFIT FROM THE VALUABLE SERVICES FROM KNAUF



## KNAUF DIREKT

Our technical advisory service – from professionals for professionals! Choose the direct line to “just in time” consultation and benefit from our extensive experience giving you the assurance that you need.

> **Contact us at:**  
**knauf-direkt@knauf.de**



## KNAUF CUSTOMER SERVICES

Our customer services support your daily business and are happy to help whenever you need assistance. For regional customer services and more information please consult

> **www.knauf.com**



## KNAUF DIGITAL

Web or App – Technical documentation, calculation tools, interactive animations, and lots more are available around the clock and free-of-charge from the digital world of Knauf. Clicks that are really worth it!

> **www.knauf.de**  
> **www.youtube.com/knauf**  
> **www.twitter.com/knauf\_presse**  
> **www.facebook.com/KnaufDE**

**Knauf Gips KG**  
**Am Bahnhof 7**  
**97346 Iphofen**  
**Germany**

Tro192.de/eng/07.19/0/Pr

**Knauf AMF**  
Ceiling systems  
**Knauf Aquapanel**  
TecTem®  
Loose fill insulation material

**Knauf Bauprodukte**  
Professional DIY solutions

**Knauf Design**  
Competence in surfaces

**Knauf Gips**  
Drywall systems  
Plaster and façade systems  
Floor systems

**Knauf Insulation**  
Insulation system for  
renovation and new projects

**Knauf Integral**  
Gypsum fibre technology  
for floors, walls and ceilings

**Knauf PFT**  
Machine technology and  
plant engineering

**Marbos**  
Mortar systems for  
cobblestone paving

**Sakret Bausysteme**  
Dry mortars for new projects  
and renovations